



TREK

E-ticket implementation

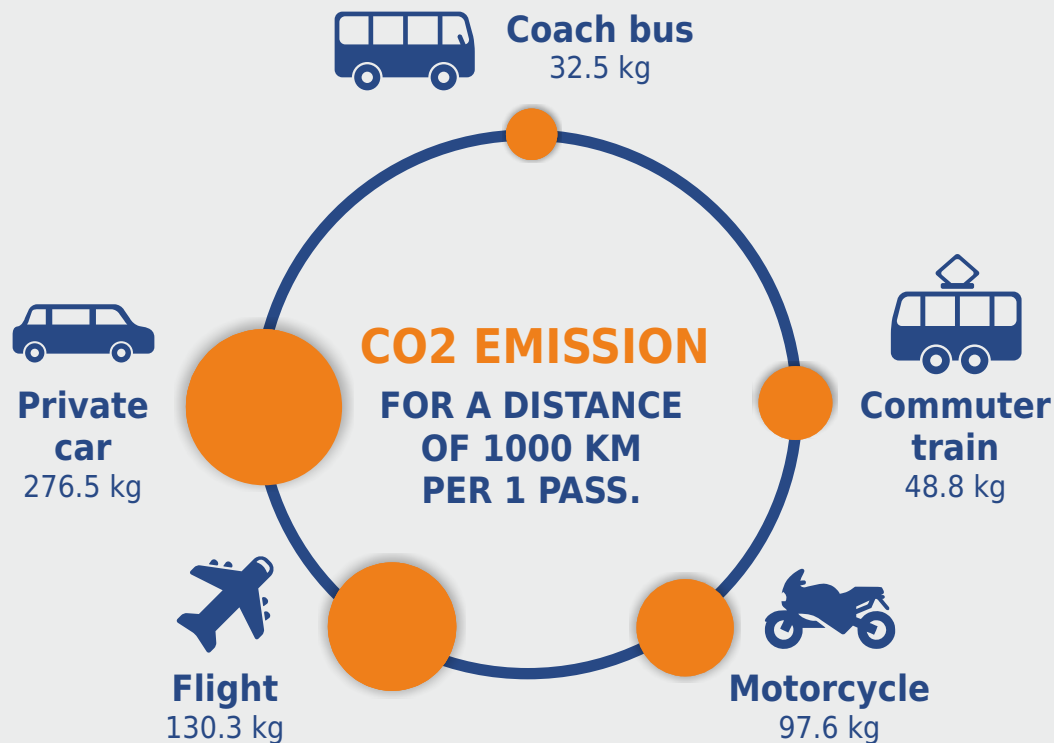
IT SOLUTION FOR GREEN
AND SUSTAINABLE FUTURE



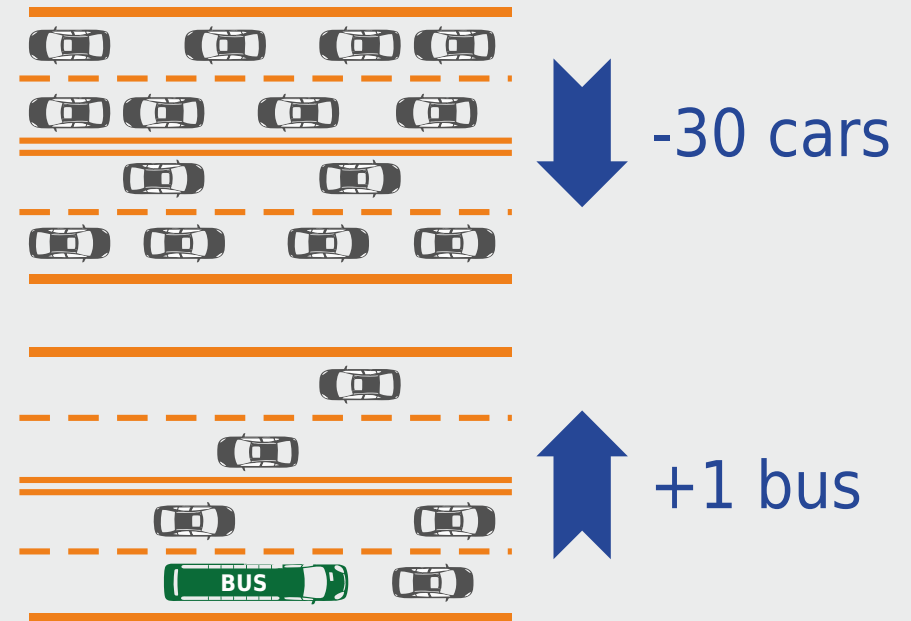


Implementing digital instruments in public transport makes it more attractive and makes car owners to choose buses. By that it is possible significantly reduce level of pollution caused by private cars.

TREK — is a solution which bring people to use more sustainable transport.



Impact of AFCS implementing



FUTURE OF TRANSPORTATION SERVICES



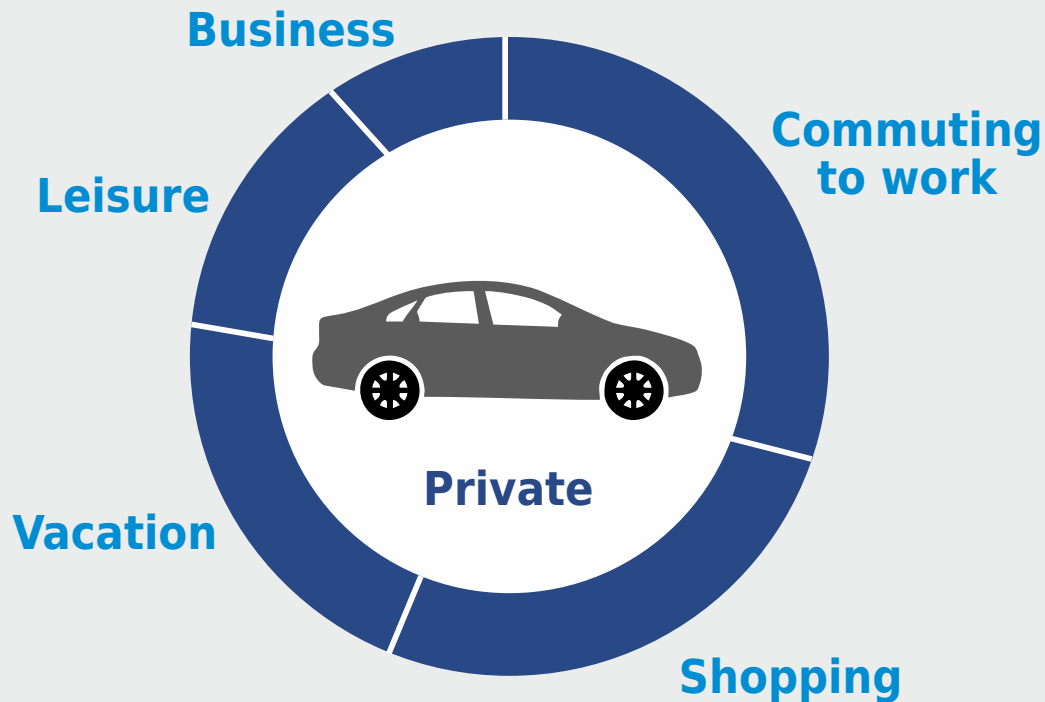
Today most people use their vehicles and offline information for planning journeys. In a future using online services and apps to plan and order transport services for journeys.

TREK — solution which integrates any type of transport into digital ecosystem accessible by online mobile apps.

AVERAGE COST PER YEAR:

TODAY: 5760\$

FUTURE: 2604\$ **~50% LESS!**





OUR SOLUTION

E-TICKET



- cashless fare payment
- guarantee preferential's transportation
- mobile applications for all participants

DISPATCHING AND GPS - MONITORING



- complex dispatching system
- informing about the public transport's operation
- optimization of the route network

TRANSPORT ENTERPRISE MANAGEMENT



- income transparency
- regulation the providing preferential transportation process
- reporting and settlements with carriers



SPEED



implementation within the region is possible in 3 months, within the country - 20 months

ECONOMICAL AVAILABILITY



does not require direct and additional investments in infrastructure and its maintenance, return on investment is a commission of from 4% from turnover

FLEXIBILITY



system configurations and elements allow you to configure the system for any use case

A unified solution for all modes of transport, improving intermodality and fleet management

Cloud-based SaaS solution requiring no additional maintenance costs

A complete package of ready-to-use own software and mobile applications for passengers, administrators and drivers



Swift optimization of preferential transport services through quick issuance of personalized cards and the application of a budget forecast analytical module

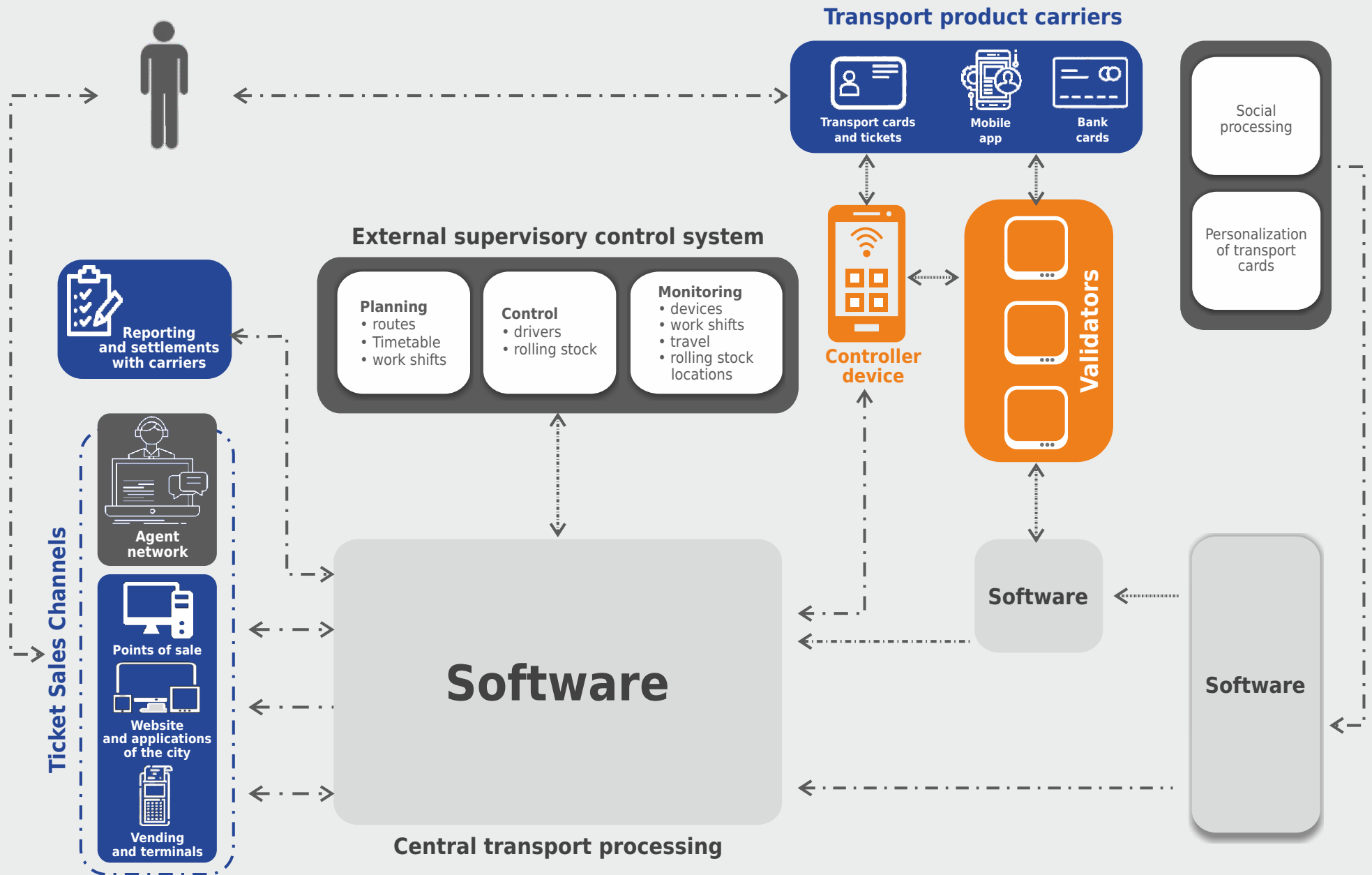
Full integration of GPS dispatching and transport infrastructure

E-ticketing implementation without additional significant budget funds based on 2 models of investment:

- 1) Collaborative investment**
- 2) Partnership with a local operator**



ECOSYSTEM ARCHITECTURE



Processing software



Infrastructure and media



Equipment for validation and control



External systems



AFCS COMPARISON



TREK – modern high-integrated IT solution providing most flexible configurations for transportation services.

	TREK	Ridango	Micro-electronica	Swarco	Symbol transport
Account-based system with Card-based support (hybrid)	✓	+ / -	-	-	-
Cloud-based SaaS solution	✓	-	-	-	-
Mobile app for customers: ticketing, trip planning, monitoring	✓	+ / -	+ / -	-	-
Mobile apps for service personnel: drivers, administrators, inspectors	✓	-	-	-	-
Full integration with dispatching and fleet management systems	✓	+ / -	+ / -	-	-
Integration with transport peripheral infrastructure (fleet alerting and bus stop boards)	✓	-	+ / -	+ / -	-
Supporting any hardware (validators, etc)	✓	-	-	-	+ / -
Modeling module for calculation of provided services (scope of beneficial services)	✓	-	-	-	-
Dispute managing system	✓	-	-	-	-

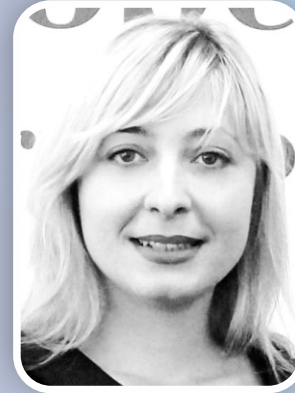


OUR TEAM AND EXPERTS



Volodymyr KOVALYK
10 years of transportation
company running

CEO GIS



Kateryna BABINA
5 years Vinnytsia AFCS CEO

Advisor GIS



Andriy KOVALYK
13 years of monitoring
and dispatching
system developing

CTO GIS



Ivan FURLET
5 years Zhytomyr AFCS CEO
and mobility expert

Advisor GIS



Roman LEV
10 years of IT dev
and implementing
company management,
Lviv PM AFCS

CBDO GIS

We have a team of specialists with experience of implementing e-ticketing (AFC) systems and mobility transformations in largest region centers in Ukraine: Lviv (800k), Vinnytsia (350k), Zhytomyr (250k) - leaders of sustainable mobility in country.

So we can provide additional consultations in developing integrated mobility services and providing modern intermodality for public transportation.



MARKET ANALYSIS

We analyzed potential markets for turnover and required investment amount.

Model of investment returning: from 5% from tickets turnover.

Appr. term of investments return and start of providing profit: 2-3 years.

Country	Inhabitants, mil	Average ride price	Average ride price, \$	Passengers per year, mil	Tickets turnover per year, mil \$	Required investments (by inhabitants), mil \$	5% from turnover/profit per year, mil \$	Appr. years for investments return
Moldova	2,6	6 LEI	0,33	244,5	80,7	7,8	4,0	3
Azerbaijan	10,1	0.30 AZN	0,17	1 500,0	255,0	30,4	12,8	3,5
Turkmenistan	6,3	0,50 TMT	0,14	3 148,7	440,8	19,0	22,0	2
Romania	20,0	0,4 EUR	0,44	1 660,7	730,7	60,0	36,5	3
Uzbekistan	34,9	1800 SUM	0,16	6 232,0	997,1	104,8	49,9	3,5
Hungary	9,7	1000 HUF	2,91	204,3	594,6	29,1	29,7	2
Bulgaria	6,9	1,60 LEI	0,6	351,0	210,6	20,6	10,5	3
Croatia	3,9	1,3 EUR	1,43	294,0	420,4	11,7	21,0	2



WE ARE LOOKING RESOURCES FOR



Deep market analysis:

Structured analysis of public transportation functioning in intercity routes in European, Asian, African, Indian, and CIS countries, and optimal model for implementing a centralized electronic ticket solution within the country.



Marketing:

Participation in startup accelerators, global events, and forums to promote the company and the core idea of "a unified electronic ticket for each country." Attracting investors and experts in public transportation and urban mobility for further adaptation of the solution to the legislation and territorial specifics of each country.



System adaptation with local specialists:

Optimizing the software for launching the MVP in European, Asian, CIS, Indian, and African countries. Collaborating with local experts in urban mobility and public transportation as consultants, developers, and lobbyists on-site.



GIS INC.



7+ years of experience,
a team of 30+ specialists



Constant support of more than
4,000 units of transport
with the GTFS protocol usage



Expertise:
development and implementation
of systems for monitoring and dispatching
moving objects, complex solutions
for public transport carriers



Ready for scaling to world transport
services market



400+ successful projects



200+ clients of companies
that carry out regular passenger
transportation

GIS

Contact us:

CBDO@ua-gis.com

World

Volodymyr Kovalyk

+1 267 506 7703

+1 754 267 5181

Europe

Roman Lev

+38 067 675 29 51

+34 613 139 242

Ukraine

Andriy Kovalyk

+38 067 672 39 05

+38 095 503 24 49